

PRESSURE VESSEL STAINLESS STEEL 316L X PED HORIZONTAL

CERTIFIED HORIZONTAL STAINLESS STEEL 316L PRESSURE VESSEL (DIRECTIVE 2014/68/UE)



PRESSURE	TEMPERATURE
Pmax	Tmax
8 bar	-10 / +50 °C

ON REQUEST:

Insulation version with elastolen 20 mm – anti-condensation

APPLICATION E TECHNICAL DESCRIPTION

Air cushion pressure vessels.

Suitable to supply water to the highest floor of the buildings and to compensate the water shortage of the water-works.

The air cushion pressure vessels X PED OR are made for the water pumping and they work as a pressured water lung that, if correctly dimensioned, can limit the self-starting of the pump. These products are entirely made in Stainless steel 316L.

DOCUMENTS ATTACHED

- CE certification
- User Instructions

CERTIFICATIONS

The X PED OR pressure vessels are made according to the security policy of the standard 2014/68/UE that rules the pressurized products. Under surveillance of the Notified Body, a CE mark is stuck on them as well as the following project data that characterize the product:

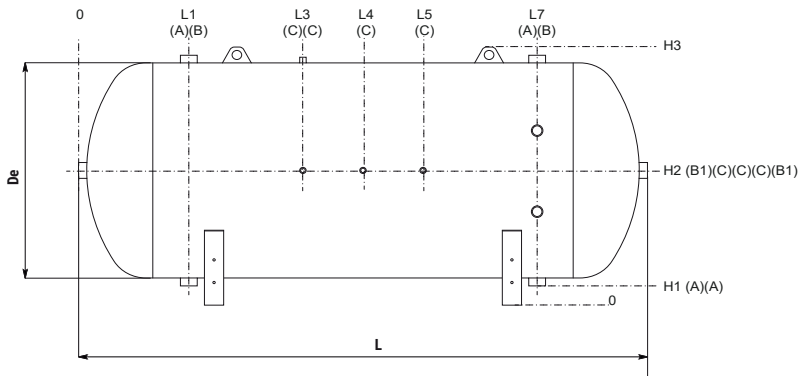
- Pressurized fluid: water + air or nitrogen
- Fluid group: 2
- Max operating pressure: see the table chart
- Temperature: -10/+50 °C

WARRANTY

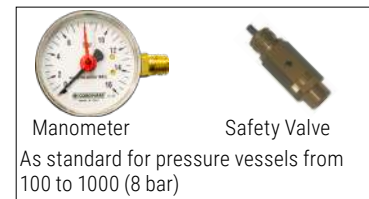
2 years-See general sales conditions and warranty.

AUTOCL. X PED OR

Model	Art. Nr.
100	3051051010021
200	3051051010022
300	3051051010023
500	3051051010024
750	3051051010025
1000	3051051010026
1500	3051051010027
2000	3051051010028
3000	3051051010029
4000	3051051010030
5000	3051051010031



A	Input - use
B	Safety Valve/Instrumentation.
B1	Safety Valve/Instrumentation.
C	Instrumentation



Model	De	L	L1	L2	L3	L4	L5	L6	L7	H1	H2	H3	B1	A-B	C
[mm]															
100	400	960	240	327	330	480	630	633	720	70	300	530	Connections F		
200	450	1340	244	350	470	670	870	990	1096	75	330	615			
300	550	1400	300	380	500	700	900	1020	1100	120	430	765	1" 1/4	1" 1/4	1/2"
500	650	1700	320	405	650	850	1050	1295	1380	115	480	880	1" 1/4	1" 1/2	1/2"
750	750	2000	350	500	750	1000	1250	1500	1650	122	530	962	1" 1/4	2"	1/2"
1000	750	2500	350	500	1000	1250	1500	2000	2150	122	530	962	1" 1/4	2"	1/2"
1500	1000	2180	440	590	840	1090	1340	1590	1740	117	630	1200	1" 1/4	2"	1/2"
2000	1000	2660	440	580	1080	1330	1580	2080	2220	117	630	1200	1" 1/4	2"	1/2"
3000	1200	2800	560	700	1100	1400	1700	2100	2240	140	784	1480	1" 1/4	3"	1/2"
4000	1450	2930	615	765	1115	1465	1815	2165	2315	130	890	1690	1" 1/4	3"	1/2"
5000	1450	3430	615	790	1315	1715	2115	2640	2815	130	890	1690	1" 1/4	3"	1/2"