

PRESSURE VESSEL GALVANIZED Z PED HORIZONTAL

CERTIFIED HORIZONTAL GALVANIZED PRESSURE VESSEL (DIRECTIVE 2014/68/UE)



PRESSURE	TEMPERATURE
Pmax	Tmax
[see table chart]	-10 / +50 °C

ON REQUEST:

Closed cell anti-condensation polyethylene foam glued to the body of the tank (not removable).
Thickness 20 mm, anti-condensation.
Surcharge +15%

APPLICATION E TECHNICAL DESCRIPTION

Air cushion pressure vessels.
Suitable to supply water to the highest floors of the buildings and to compensate the water shortage of the water-works. The air cushion pressure vessels Z PED OR are made for water pumping and they work as a pressured water lung that, if correctly dimensioned, can limit the self-starting of the pump.
These products are made in galvanized mild steel.

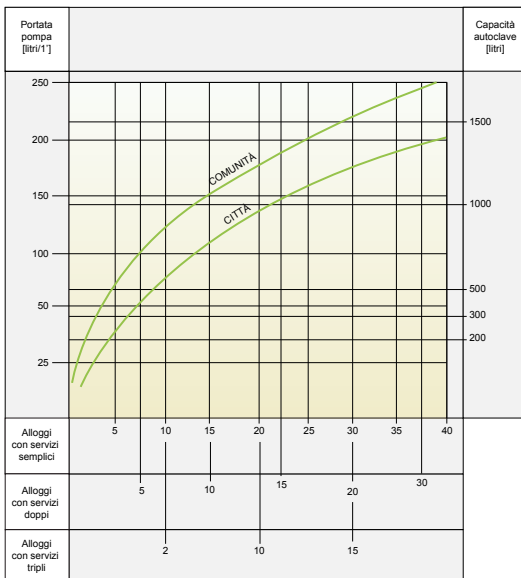
ANTI-CORROSION TREATMENT

These tanks are galvanized inside and outside, with immersion in a pool of fused zinc with purity not below than 99,99% (Uni EN 1179)

DOCUMENTS ATTACHED

- CE certification
- User Instructions

To quickly determine both the capacity of the pressure vessel and the pump according to the number of the flats, you can use the following chart (always valid for 15 self-starting per hour).



Model	AUTOCL. Z OR	Max Pressure
	Art. Nr.	[Bar]
100	3052170990001	8
200	3052170990022	
300	3052170990003	
500	3052170990004	
750	3052170990025	
1000	3052170990026	
1500	3051170990015	
2000	3051170990016	
3000	3051170990068	
4000	3051170990019	
5000	3051170990020	

Models from 100 to 1000 are provided with safety valve and pressure gauge.

Model	AUTOCL. Z OR	Max Pressure
	Art. Nr.	[Bar]
100	3052170990015	11,76
200	3051170990072	
300	3051170990025	
500	3051170990026	
750	3051170990077	
1000	3051170990078	12
1500	3051170990040	
2000	3051170990030	
2500	3051170990041	
3000	3051170990082	
4000	3051170990042	
5000	3051170990044	

Models from 100 to 500 are provided with safety valve and pressure gauge.

CERTIFICATIONS

The Z PED pressure vessels are made according to the security policy of the standard 2014/68/UE that rules the pressurized products. Under surveillance of the Notified Body, a CE mark is stuck on them as well as the following project data that characterize the product:

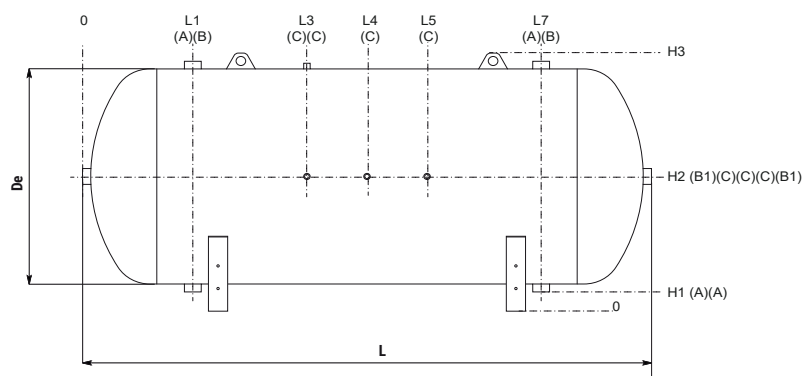
- Pressurized fluid: water + air or nitrogen
- Fluid group: 2
- Max operating pressure: see the table chart
- Temperature: -10/+50 °C

WARRANTY

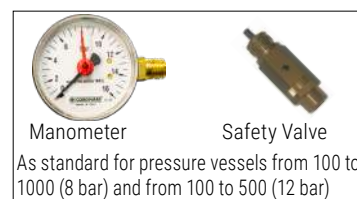
2 years-See general sales conditions and warranty.

PRESSURE VESSEL GALVANIZED Z PED HORIZONTAL

CERTIFIED HORIZONTAL GALVANIZED PRESSURE VESSEL (DIRECTIVE 2014/68/UE)



A	Input - use
B	Safety Valve/Instrumentation
B1	Safety Valve/Instrumentation
C	Instrumentation



Model	De	L	L1	L2	L3	L4	L5	L6	L7	H1	H2	H3	Connections F			
													B1	A-B	C	
WORKING PRESSURE 8 bar	100	400	955	230	300	338	478	618	655	725	69	294	518	1" 1/4	1"	1/2"
	200	450	1350	240	340	475	675	875	1010	1110	67	317	568	1" 1/4	1"	1/2"
	300	550	1399	285	370	500	700	900	1030	1115	119	424	762	1" 1/4	1" 1/4	1/2"
	500	650	1700	325	420	650	850	1050	1280	1375	115	470	870	1" 1/4	1" 1/2	1/2"
	750	790	1750	350	520	675	875	1075	1230	1400	107	532	987	1" 1/4	1" 1/2	1/2"
	1000	790	2250	350	520	900	1150	1400	1730	2000	107	532	987	1" 1/4	1" 1/2	1/2"
	1500	950	2340	415	565	1020	1170	1420	1775	1945	143	643	1196	2"	2"	1/2"
	2000	1100	2450	470	615	975	1225	1475	1835	1980	100	683	1280	2"	2"	1/2"
	3000	1200	2770	550	685	1085	1385	1685	2085	2220	140	784	1480	3"	2"	1/2"
	4000	1450	2890	600	745	1065	1445	1825	2145	2290	122	887	1670	3"	2"	1/2"
5000	1450	3390	600	745	1315	1695	2075	2645	2790	122	887	1670	3"	2"	1/2"	

Models from 100 to 1000 are provided with security valve and pressure gauge

Model	De	L	L1	L2	L3	L4	L5	L6	L7	H1	H2	H3	Connections F			
													B1	A-B	C	
WORKING PRESSURE 11,76 bar	100	400	960	240	310	345	480	615	650	720	75	305	535	1" 1/4	1"	1/2"
	200	450	1340	268	350	470	670	870	990	1072	75	330	615	1" 1/4	1"	1/2"
	300	550	1400	295	375	500	700	900	1025	1105	120	430	765	1" 1/4	1" 1/4	1/2"
	500	650	1700	320	450	650	850	1050	1250	1380	115	480	890	1" 1/4	1" 1/2	1/2"
	750	790	1750	330	550	675	875	1075	1200	1420	107	532	987	1" 1/4	1" 1/2	1/2"
	1000	790	2250	330	550	875	1125	1375	1700	1920	107	532	987	1" 1/4	1" 1/2	1/2"
	1500	950	2360	420	570	930	1180	1430	1790	1940	117	622	1196	2"	2"	1/2"
	2000	1100	2450	470	615	975	1225	1475	1835	1980	100	683	1280	2"	2"	1/2"
	2500	1200	2520	510	650	1010	1260	1510	1870	2010	140	784	1480	3"	2"	1/2"
	3000	1200	2770	550	685	1085	1385	1685	2085	2220	140	784	1480	3"	2"	1/2"
WORKING PRESSURE 12 bar	4000	1450	2890	600	745	1065	1445	1825	2145	2290	122	887	1670	3"	2"	1/2"
	5000	1450	3390	600	745	1315	1695	2075	2645	2790	122	887	1670	3"	2"	1/2"

Models from 100 to 500 are provided with security valve and pressure gauge