



LUCY 25 PLUS

**EUROPEAN
WARRANTY**

MATERIAL:

- Vertical collectors in painted mild steel \varnothing 30 mm.
- Double horizontal heating elements in painted mild steel \varnothing 25 mm.

FIXING KIT:

Brackets, airvent, hexagonal tool, plugs and screws for mounting suitable for use on compact or hollow brick, user notice.

The kit is certified from TÜV in compliance with VDI 6036 - class 4.

PACKAGING:

Carton angular and profiles protected by a recyclable film in polyethylene. User notice included.

PAINTING PROCESS:

Painted with ecological epoxy powders (Certificate DIN 55900-1,-2).

COLOURS:

See colour chart.

ACCESSORIES:

For the complete list, please refer to the accessories chapter.

AVAILABLE FUNCTIONS:

- Hot water
- Dual energy

P. max: 8 bar

Functioning: hot water

T. max: 110° C

Connections: n° 2 x 1/2" G - 1 x 1/2" G

CERTIFICATES



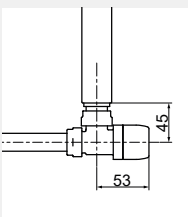
ACCESSORIES



Kristal valve square with thermostatic option white R01

Copper conn. \varnothing 12/14/15
Art. nr. 5991990311161

Multilayer conn. \varnothing 16
Art. nr. 5991990311160



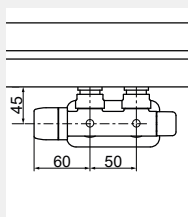
Quotes for square Kristal valves with thermostatic option



Kristal valve square pipe centres 50 mm left white R01

Copper conn. \varnothing 12/14/15
Art. nr. 5991990311188

Multilayer conn. \varnothing 16
Art. nr. 5991990311187



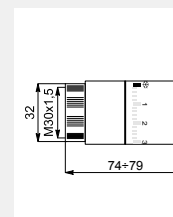
Quotes for square Kristal valves with thermostatic option



Thermostatic head white

(Kit 2 pieces)

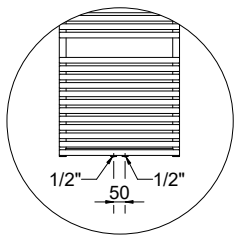
Art. nr. 5035270710016



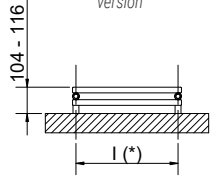
Thermostatic head quotes

If ordered separately from the radiator, the accessories are available in standard white only

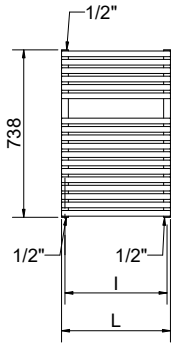
Art. nr. are referred to colour WHITE R01



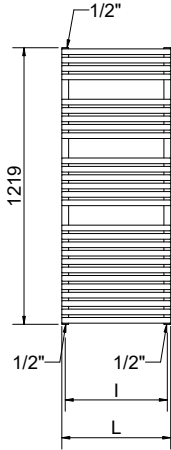
Detail of the pipe centres 50 mm version



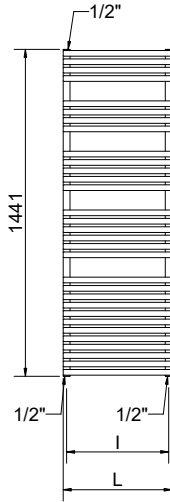
18 + 18 ELEMENTS



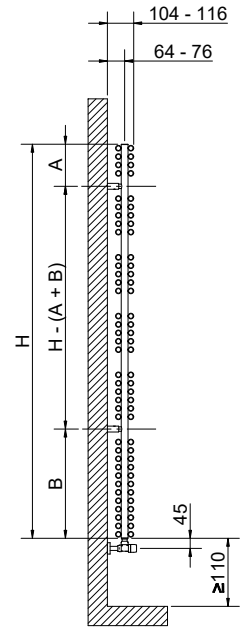
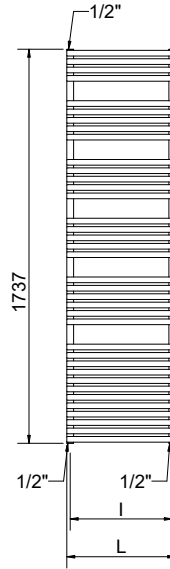
27 + 27 ELEMENTS



31 + 31 ELEMENTS



37 + 37 ELEMENTS



(*) The fixing kit has the same pipe centre (l) as the radiator

Quotes for Kristal valves

LUCY 25 PLUS

Height [mm]	Width L [mm]	Pipe centres l [mm]	A [mm]	B [mm]	Art. nr.	Pipe centres 50 mm		Thermal output [Watt]				Dual energy kit	
						Art. nr.	Dry Weight [Kg]	Surface [m ²]	Water content [t]	Δt=50°C	Δt=30°C	Exp. n	[Watt]
738	430	400	226	911	3551406101400	3551406101414	11,07	1,44	7,76	531	280	1,2566	500
	480	450			3551406101404	3551406101418	11,50	1,50	8,06	653	343	1,2617	600
	430	400			3551406101401	3551406101415	15,84	2,05	11,11	787	401	1,3182	700
1219	480	450	185	481	3551406101405	3551406101419	17,43	2,27	12,23	954	495	1,2839	900
	530	500			3551406101408	3551406101422	19,03	2,48	13,35	1118	556	1,3677	1000
	580	550			3551406101411	3551406101425	20,63	2,69	14,47	1460	719	1,3852	1200
1441	430	400	185	481	3551406101402	3551406101416	18,25	2,37	12,80	871	453	1,2774	900
	480	450			3551406101406	3551406101420	20,09	2,61	14,09	1056	546	1,2922	1000
	530	500			3551406101409	3551406101423	21,92	2,85	15,38	1250	648	1,2869	1200
	580	550			3551406101412	3551406101426	23,76	3,10	16,66	1647	844	1,3090	1200
1737	430	400	185	481	3551406101403	3551406101417	21,81	2,83	15,30	1013	527	1,2794	1000
	480	450			3551406101407	3551406101421	24,01	3,12	16,84	1236	637	1,2993	1200
	530	500			3551406101410	3551406101424	26,20	3,41	18,37	1454	741	1,3203	1200
	580	550			3551406101413	3551406101427	28,39	3,70	19,91	1583	802	1,3300	1200

Art. nr. are referred to colour WHITE R01

For output at different ΔT, please refer to the following formula: desired output = output at ΔT 50 x (desired Δt/50)ⁿ