



# LUCY 18

**EUROPEAN  
WARRANTY**

**MATERIAL:**

- Vertical collectors in painted mild steel  $\varnothing$  30 mm.
- Horizontal heating elements in painted mild steel  $\varnothing$  18 mm.

**FIXING KIT:**

Brackets, airvent, hexagonal tool, plugs and screws for mounting suitable for use on compact or hollow brick, user notice.

The kit is certified from TÜV in compliance with VDI 6036 - class 4.

**PACKAGING:**

Carton angular and profiles protected by a recyclable film in polyethylene. User notice included.

**PAINTING PROCESS:**

Painted with ecological epoxy powders (Certificate DIN 55900-1,-2).

**COLOURS:**

See colour chart.

**ACCESSORIES:**

For the complete list, please refer to the accessories chapter.

AVAILABLE FUNCTIONS:

- Hot water
- Electric
- Dual energy

P. max: 8 bar

Functioning: hot water

T. max: 110° C

Connections: n° 2 x 1/2" G - 1 x 1/2" G

## CERTIFICATES



## ACCESSORIES

**Kristal valve square  
with thermostatic option  
white R01**



Copper conn.  $\varnothing$  12/14/15  
Art. nr. 5991990311161

Multilayer conn.  $\varnothing$  16  
Art. nr. 5991990311160



**Kit 2 hooks  
white R01**

Art. nr. 5991990310388

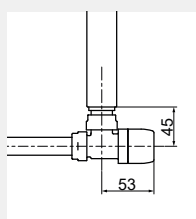


**Towel bar  
white R01**

Width 440 mm

Available with width  $\geq$   
500 mm

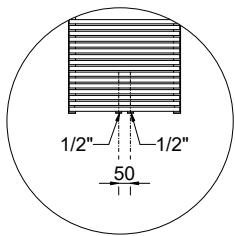
Art. nr. 5991990331126



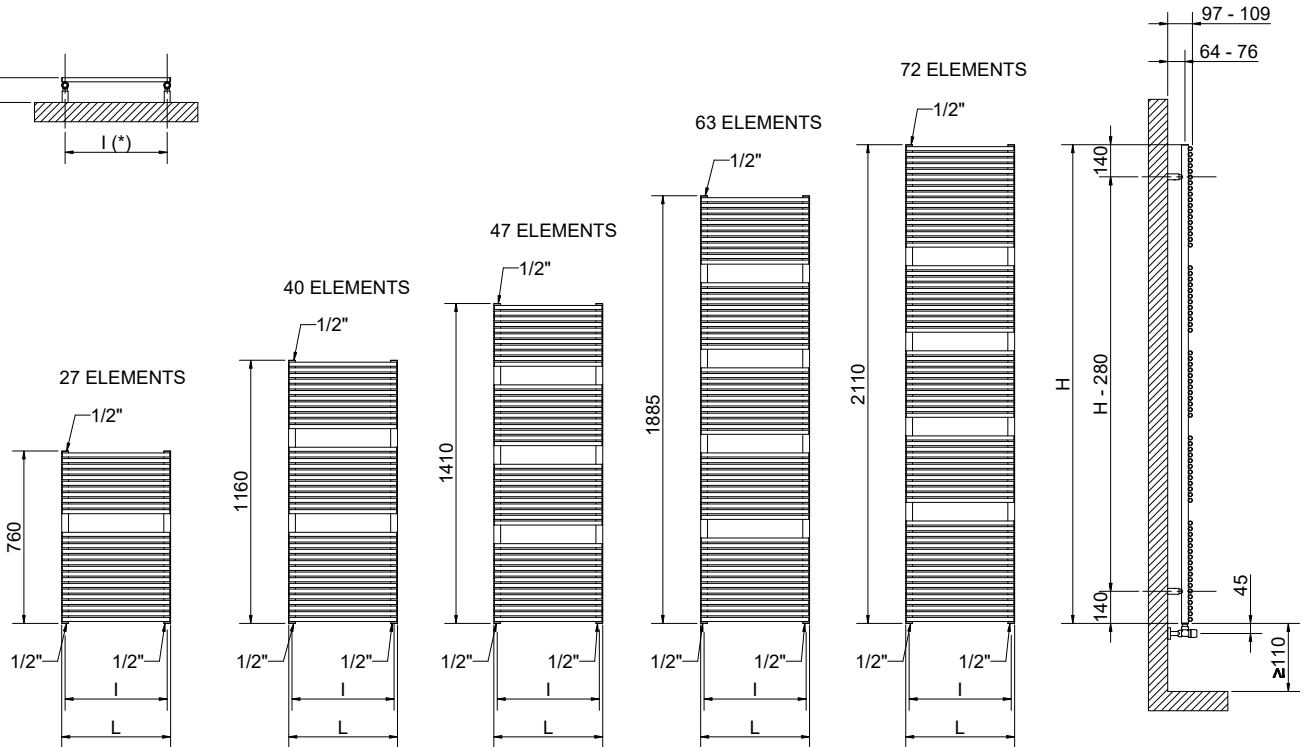
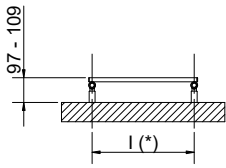
Quotes for square Kristal valves with thermostatic option

*If ordered separately from the radiator, the accessories are available in standard white only*

*Art. nr. are referred to colour WHITE R01*



Detail of the pipe centres 50 mm version



(\*) The fixing kit has the same pipe centre (l) as the radiator

Quotes for Kristal valves

### LUCY 18

Height [mm]	Width L [mm]	Pipe centres l [mm]	Art. nr.	Pipe centres 50 mm		Thermal output [Watt]					Dual energy kit [Watt]
				Art. nr.	Dry Weight [Kg]	Surface [m <sup>2</sup> ]	Water content [lt]	Δt=50°C	Δt=30°C	Exp. n	
760	430	400	3551406100300	3551406100320	6,7	0,75	2,9	436	238	1,1839	400
	480	450	3551406100304	3551406100324	8,0	0,88	3,3	489	268	1,1780	500
	430	400	3551406100301	3551406100321	11,0	1,19	4,6	631	341	1,2071	600
1160	480	450	3551406100305	3551406100325	12,0	1,30	4,9	705	383	1,1960	700
	530	500	3551406100308	3551406100328	13,0	1,42	5,3	779	425	1,1852	700
	580	550	3551406100312	3551406100332	13,9	1,53	5,7	852	468	1,1743	700
1410	430	400	3551406100302	3551406100322	13,0	1,40	5,4	753	407	1,2065	700
	480	450	3551406100306	3551406100326	14,2	1,54	5,9	838	455	1,1971	700
	530	500	3551406100309	3551406100329	15,3	1,67	6,4	923	503	1,1876	900
1885	580	550	3551406100313	3551406100333	16,5	1,81	6,2	1008	552	1,1782	1000
	430	400	3551406100303	3551406100323	17,5	1,87	7,3	986	533	1,2054	1000
	480	450	3551406100307	3551406100327	19,1	2,07	7,9	1090	591	1,1988	1000
2110	530	500	3551406100310	3551406100330	20,5	2,24	8,5	1194	649	1,1922	1200
	580	550	3551406100314	3551406100334	22,2	2,44	9,1	1298	708	1,1856	1200
	530	500	3551406100311	3551406100331	23,4	2,56	9,7	1322	722	1,1853	1200
2110	580	550	3551406100315	3551406100335	25,2	2,76	10,3	1438	788	1,1779	1200
	730	700	3551406100316	3551406100336	30,7	3,38	12,5	1768	980	1,1558	1200

Art. nr. are referred to colour WHITE R01

For output at different ΔT, please refer to the following formula: desired output = output at ΔT 50 x (desired Δt/50)<sup>n</sup>