



LUCY 18 PLUS

**EUROPEAN
WARRANTY**

MATERIAL:

- Vertical collectors in painted mild steel \varnothing 30 mm.
- Double horizontal heating elements in painted mild steel \varnothing 18 mm.

FIXING KIT:

Brackets, airvent, hexagonal tool, plugs and screws for mounting suitable for use on compact or hollow brick, user notice.
The kit is certified from TÜV in compliance with VDI 6036 - class 4.

PACKAGING:

Carton angular and profiles protected by a recyclable film in polyethylene. User notice included.

PAINTING PROCESS:

Painted with ecological epoxy powders (Certificate DIN 55900-1,-2).

COLOURS:

See colour chart.

ACCESSORIES:

For the complete list, please refer to the accessories chapter.

AVAILABLE FUNCTIONS:

- Hot water
- Dual energy

P. max: 8 bar

Functioning: hot water

T. max: 110° C

Connections: n° 2 x 1/2" G - 1 x 1/2" G

CERTIFICATES



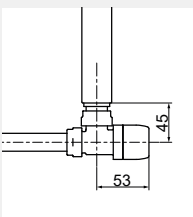
ACCESSORIES



Kristal valve square with thermostatic option white R01

Copper conn. \varnothing 12/14/15
Art. nr. 5991990311161

Multilayer conn. \varnothing 16
Art. nr. 5991990311160



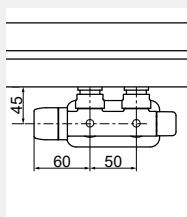
Quotes for square Kristal valves with thermostatic option



Kristal valve square pipe centres 50 mm left white R01

Copper conn. \varnothing 12/14/15
Art. nr. 5991990311188

Multilayer conn. \varnothing 16
Art. nr. 5991990311187



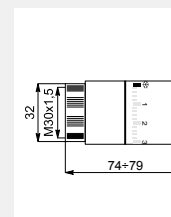
Quotes for square Kristal valves with thermostatic option



Thermostatic head white

(Kit 2 pieces)

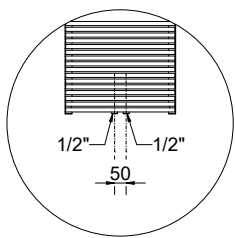
Art. nr. 5035270710016



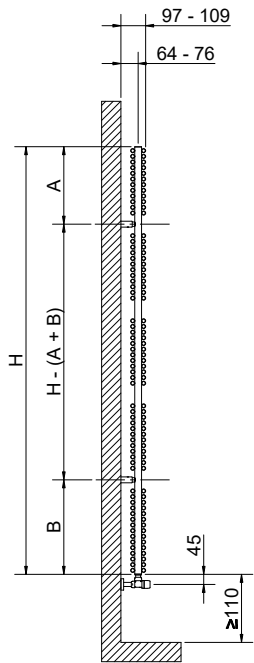
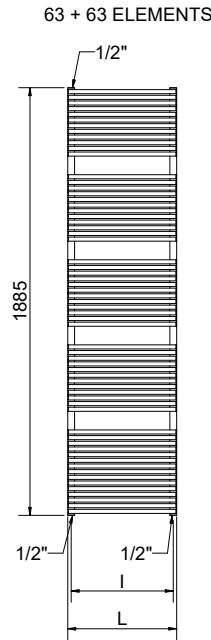
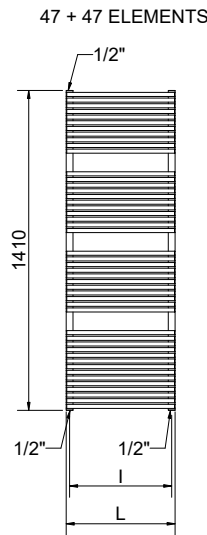
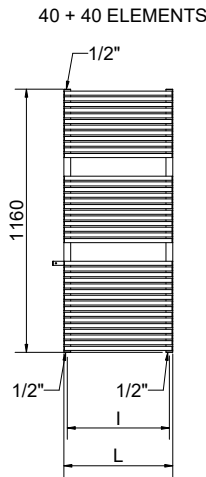
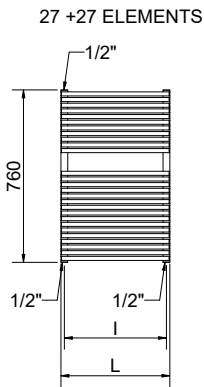
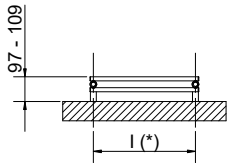
Thermostatic head quotes

If ordered separately from the radiator, the accessories are available in standard white only

Art. nr. are referred to colour WHITE R01



Detail of the pipe centres 50 mm version



(*) The fixing kit has the same pipe centre (l) as the radiator

Quotes for Kristal valves

LUCY 18 PLUS

Height [mm]	Width L [mm]	Pipe centres l [mm]	A [mm]	B [mm]	Art. nr.	Pipe centres 50 mm		Thermal output [Watt]				Dual energy kit	
						Art. nr.	Dry Weight [Kg]	Surface [m ²]	Water content [t]	Δt=50°C	Δt=30°C	Exp. n	[Watt]
760	430	400	316	67	3551406101300	3551406101314	12,7	1,4	5,1	565	298	1,2541	500
	480	450			3551406101304	3551406101318	14,0	1,6	5,6	711	377	1,2431	700
	430	400	3551406101301	3551406101315	19,5	1,2	7,9	821	432	1,2564	700		
1160	480	450	341	441	3551406101305	3551406101319	21,5	2,3	8,7	1018	538	1,2495	1000
	530	500			3551406101308	3551406101322	23,5	2,6	9,4	1215	643	1,2449	1200
	580	550			3551406101311	3551406101325	25,3	2,8	10,2	1609	854	1,2391	1200
1410	430	400	316	391	3551406101302	3551406101316	23,0	2,5	9,4	957	503	1,2576	900
	480	450			3551406101306	3551406101320	25,4	2,8	10,2	1183	624	1,2529	1200
	530	500			3551406101309	3551406101323	27,2	3,0	11,3	1421	750	1,2498	1200
	580	550			3551406101312	3551406101326	30,2	3,3	12,0	1897	1004	1,2459	1200
1885	430	400	341	416	3551406101303	3551406101317	31,0	3,4	12,5	1268	666	1,2604	1200
	480	450			3551406101307	3551406101321	34,0	3,8	13,7	1565	822	1,2608	1200
	530	500			3551406101310	3551406101324	37,2	4,1	14,9	1861	977	1,2610	1200
	580	550			3551406101313	3551406101327	40,3	4,5	16,1	2042	1072	1,2621	1200

Art. nr. are referred to colour WHITE R01

For output at different ΔT, please refer to the following formula: desired output = output at ΔT 50 x (desired Δt/50)ⁿ