



# LEILA

## POLISHED STAINLESS STEEL

WARRANTY  
**10 YEARS**

### MATERIAL:

- Vertical collectors in polished stainless steel  $\varnothing$  30 mm.
- Horizontal elements in polished stainless steel  $\varnothing$  18 mm.

### FIXING KIT:

Brackets, airvent, hexagonal tool, plugs and screws for mounting suitable for use on compact or hollow brick, user notice.

The kit is certified from TÜV in compliance with VDI 6036 - class 4.

### PACKAGING:

Carton angular and profiles protected by a recyclable film in polyethylene. User notice included.

### FEATURES:

It is totally made in stainless steel with an unalterable finishing guaranteed during the years.

### ACCESSORIES:

For the complete list, please refer to the accessories chapter.

### AVAILABLE FUNCTIONS:

- Hot water
- Electric
- Dual energy

P. Max: 8 bar

Functioning: hot water

T. Max: 110° C

Connections: n° 2 x 1/2" G - 1 x 1/2" G

## CERTIFICATES



## ACCESSORIES



### Kristal valve square with thermostatic option chromed

Copper conn.  $\varnothing$  12/14/15  
Art. nr. 5991990311165

Multilayer conn.  $\varnothing$  16  
Art. nr. 5991990311166



### Kristal corner valve with thermostatic option chromed

Copper conn.  $\varnothing$  12/14/15  
Art. nr. 5991990301148

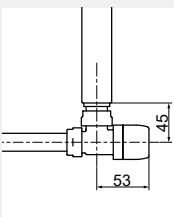
Multilayer conn.  $\varnothing$  16  
Art. nr. 5991990301147



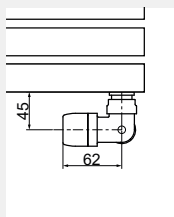
### Thermostatic head chromed

(Kit 2 pieces)

Art. nr. 5035270710015



Quotes for square Kristal valves with thermostatic option

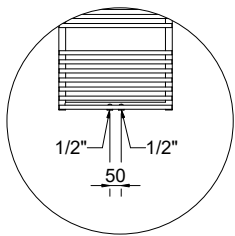


Quotes for corner Kristal valves with thermostatic option

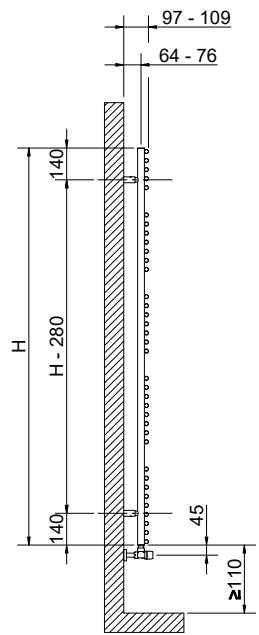
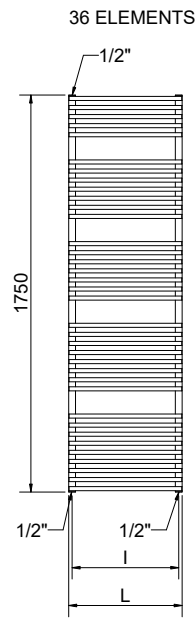
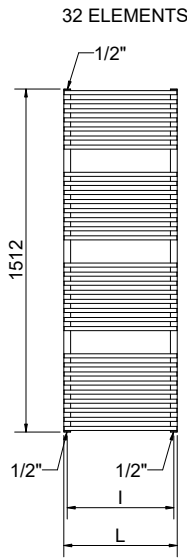
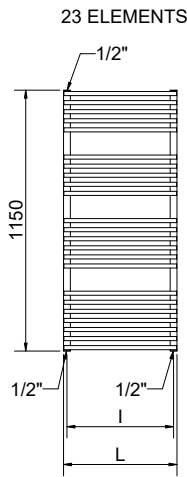
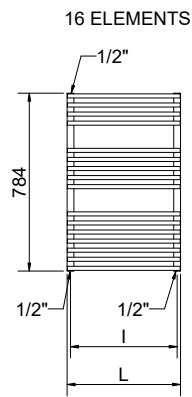
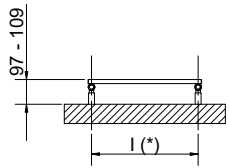


### Pair of polished tube cover kit

Art. nr. 5103000000061



Detail of the pipe centres 50 mm version



(\*) The fixing kit has the same pipe centre (l) as the radiator

Quotes for Kristal valves

LEILA POLISHED STAINLESS STEEL				Pipe centres 50 mm			Thermal output [Watt]			Dual energy kit	
Height [mm]	Width L [mm]	Pipe centres l [mm]	Art. nr.	Art. nr.	Dry Weight [Kg]	Surface [m <sup>2</sup> ]	Water content [lt]	Δt=50°C	Δt=30°C	Exp. n	[Watt]
<b>784</b>	400	370	3551560400001	3551560400051	5,7	0,50	2,0	217	118	1,2007	-
	450	420	3551560400002	3551560400052	6,2	0,55	2,2	237	129	1,1963	-
	500	470	3551560400003	3551560400053	6,6	0,60	2,3	258	140	1,1919	-
	600	570	3551560400005	3551560400055	7,6	0,69	2,6	299	163	1,1831	300
<b>1150</b>	400	370	3551560400006	3551560400056	8,2	0,73	3,0	313	167	1,2306	300
	450	420	3551560400007	3551560400057	8,9	0,82	3,1	342	182	1,2324	300
	500	470	3551560400008	3551560400058	9,6	0,87	3,3	370	197	1,2342	300
	600	570	3551560400010	3551560400060	11,0	0,99	3,7	428	227	1,2378	400
<b>1512</b>	800	770	3551560400021	3551560400071	13,3	1,27	4,5	544	288	1,2426	500
	400	370	3551560400011	3551560400061	11,2	1,00	4,0	416	220	1,2434	400
	450	420	3551560400012	3551560400062	12,1	1,10	4,3	455	242	1,2393	400
	500	470	3551560400013	3551560400063	13,1	1,19	4,6	493	262	1,2352	500
	600	570	3551560400015	3551560400065	15,1	1,37	5,1	570	305	1,2270	600
	800	770	3551560400022	3551560400072	18,3	1,73	6,2	724	389	1,2159	700
<b>1750</b>	400	370	3551560400016	3551560400066	12,7	1,14	4,6	490	259	1,2518	500
	450	420	3551560400017	3551560400067	13,8	1,25	4,9	536	284	1,2438	500
	500	470	3551560400018	3551560400068	14,9	1,34	5,2	581	307	1,2459	600
	600	570	3551560400020	3551560400070	17,1	1,55	5,9	673	361	1,2199	700
	800	770	3551560400023	3551560400073	20,7	1,95	7,1	857	468	1,1852	900

For output at different ΔT, please refer to the following formula: desired output = output at ΔT 50 x (desired ΔT/50)<sup>n</sup>