



# LAURA

POLISHED | SATIN  
STAINLESS STEEL

WARRANTY  
**10 YEARS**

**MATERIAL:**

- Vertical collectors in polished/SATIN STAINLESS STEEL  $\varnothing$  30 mm.
- Horizontal elements in polished/SATIN STAINLESS STEEL  $\varnothing$  25 mm.

**FIXING KIT:**

Brackets, airvent, hexagonal tool, plugs and screws for mounting suitable for use on compact or hollow brick, user notice.  
The kit is certified from TÜV in compliance with VDI 6036 - class 4.

**PACKAGING:**

Carton angular and profiles protected by a recyclable film in polyethylene. User notice included.

**FEATURES:**

It is totally made in stainless steel with an unalterable finishing guaranteed during the years.

**ACCESSORIES:**

For the complete list, please refer to the accessories chapter.

AVAILABLE FUNCTIONS:

- Hot water
- Electric

P. Max: 8 bar

Functioning: hot water

T. Max: 110° C

Connections: n° 2 x 1/2" G - 1 x 1/2" G

CERTIFICATES



ACCESSORIES



**Kristal valve square with thermostatic option chromed**

Copper conn.  $\varnothing$  12/14/15  
Art. nr. 5991990311165

Multilayer conn.  $\varnothing$  16  
Art. nr. 5991990311166



**Kristal corner valve with thermostatic option chromed**

Copper conn.  $\varnothing$  12/14/15  
Art. nr. 5991990301148

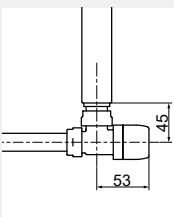
Multilayer conn.  $\varnothing$  16  
Art. nr. 5991990301147



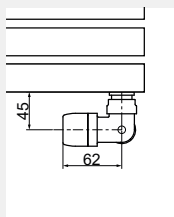
**Thermostatic head chromed**

(Kit 2 pieces)

Art. nr. 5035270710015



Quotes for square Kristal valves with thermostatic option

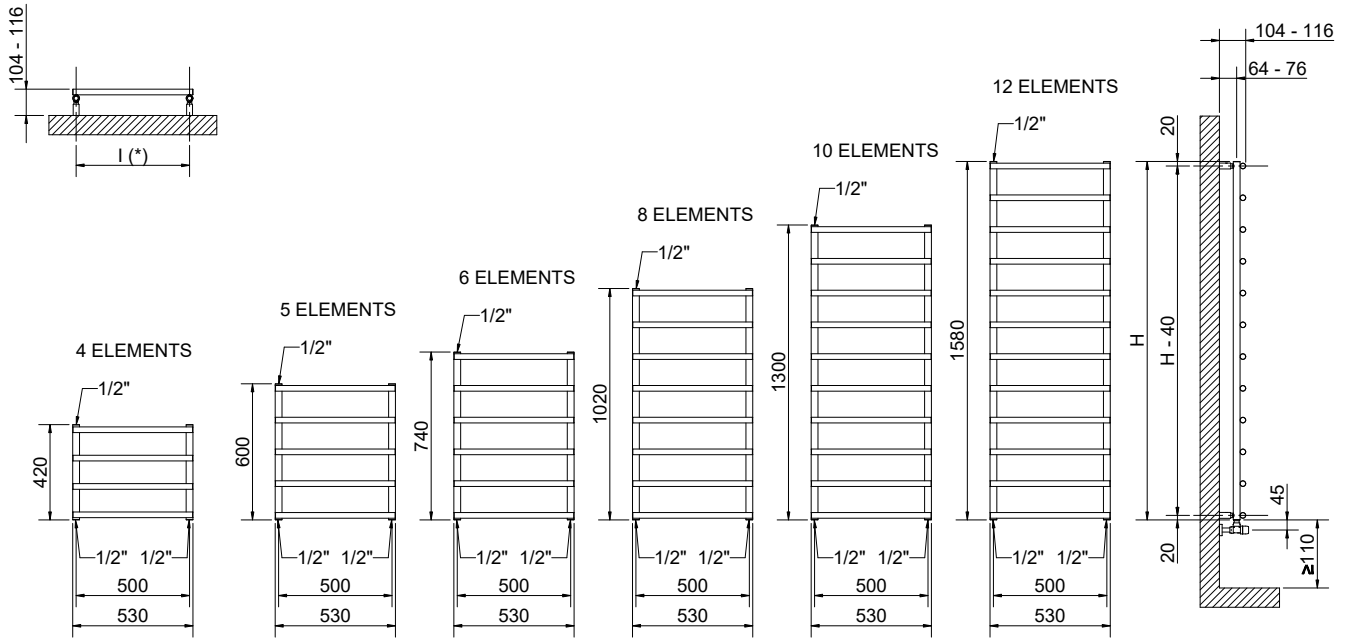


Quotes for corner Kristal valves with thermostatic option



**Pair of polished tube cover kit**

Art. nr. 5103000000061



(\*) The fixing kit has the same pipe centre (l) as the radiator

Quotes for Kristal valves

### LAURA POLISHED STAINLESS STEEL

Height [mm]	Width L [mm]	Pipe centres l [mm]	Art. nr.	Dry Weight [Kg]	Surface [m <sup>2</sup> ]	Water content [lt]	Thermal output [Watt]		Exp. n
							Δt=50°C	Δt=30°C	
<b>420</b>	530	500	3551570400001	2,57	0,25	1,32	112	63	1,1405
<b>600</b>	530	500	3551570400002	3,36	0,32	1,74	146	81	1,1542
<b>740</b>	530	500	3551570400003	4,03	0,39	2,11	173	95	1,1648
<b>1020</b>	530	500	3551570400004	5,41	0,53	2,86	228	124	1,1861
<b>1300</b>	530	500	3551570400005	6,80	0,66	3,60	288	158	1,1765
<b>1580</b>	530	500	3551570400006	8,18	0,80	4,34	354	193	1,1829

For output at different ΔT, please refer to the following formula: desired output = output at ΔT 50 x (desired Δt/50)<sup>n</sup>

### LAURA SATIN STAINLESS STEEL

Height [mm]	Width L [mm]	Pipe centres l [mm]	Art. nr.	Dry Weight [Kg]	Surface [m <sup>2</sup> ]	Water content [lt]	Thermal output [Watt]		Exp. n
							Δt=50°C	Δt=30°C	
<b>420</b>	530	500	3551570450001	2,57	0,25	1,32	121	68	1,1605
<b>600</b>	530	500	3551570450002	3,36	0,32	1,74	158	88	1,1742
<b>740</b>	530	500	3551570450003	4,03	0,39	2,11	187	103	1,1855
<b>1020</b>	530	500	3551570450004	5,41	0,53	2,86	247	134	1,2062
<b>1300</b>	530	500	3551570450005	6,80	0,66	3,60	312	171	1,1966
<b>1580</b>	530	500	3551570450006	8,18	0,80	4,34	383	209	1,2031

For output at different ΔT, please refer to the following formula: desired output = output at ΔT 50 x (desired Δt/50)<sup>n</sup>