



KATIA VX

**EUROPEAN
WARRANTY**

MATERIAL:

- Vertical collectors in painted mild steel \varnothing 30 mm.
- Horizontal heating elements in painted mild steel 15x20 mm.

FIXING KIT:

Brackets, airvent, hexagonal tool, plugs and screws for mounting suitable for use on compact or hollow brick, user notice.

The kit is certified from TÜV in compliance with VDI 6036 - class 4.

PACKAGING:

Carton angular and profiles protected by a recyclable film in polyethylene. User notice included.

PAINTING PROCESS:

Painted with ecological epoxy powders (Certificate DIN 55900-1,-2).

COLOURS:

See colour chart.

ACCESSORIES:

For the complete list, please refer to the accessories chapter.

AVAILABLE FUNCTIONS:

- Hot water
- Dual energy

P. max: 8 bar

Functioning: hot water

T. max: 110° C

Connections: n° 2 x 1/2" G - 1 x 1/2" G

CERTIFICATES



ACCESSORIES

**Kristal valve square
with thermostatic option
white R01**



Copper conn. \varnothing 12/14/15
Art. nr. 5991990311161

Multilayer conn. \varnothing 16
Art. nr. 5991990311160



**Kit 2 hooks
white R01**

Art. nr. 5991990310391

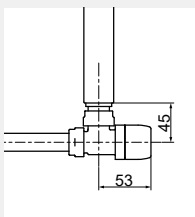


**Towel bar
white R01**

Width 440 mm

Available with width \geq
500 mm

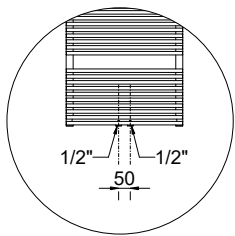
Art. nr. 5991990331129



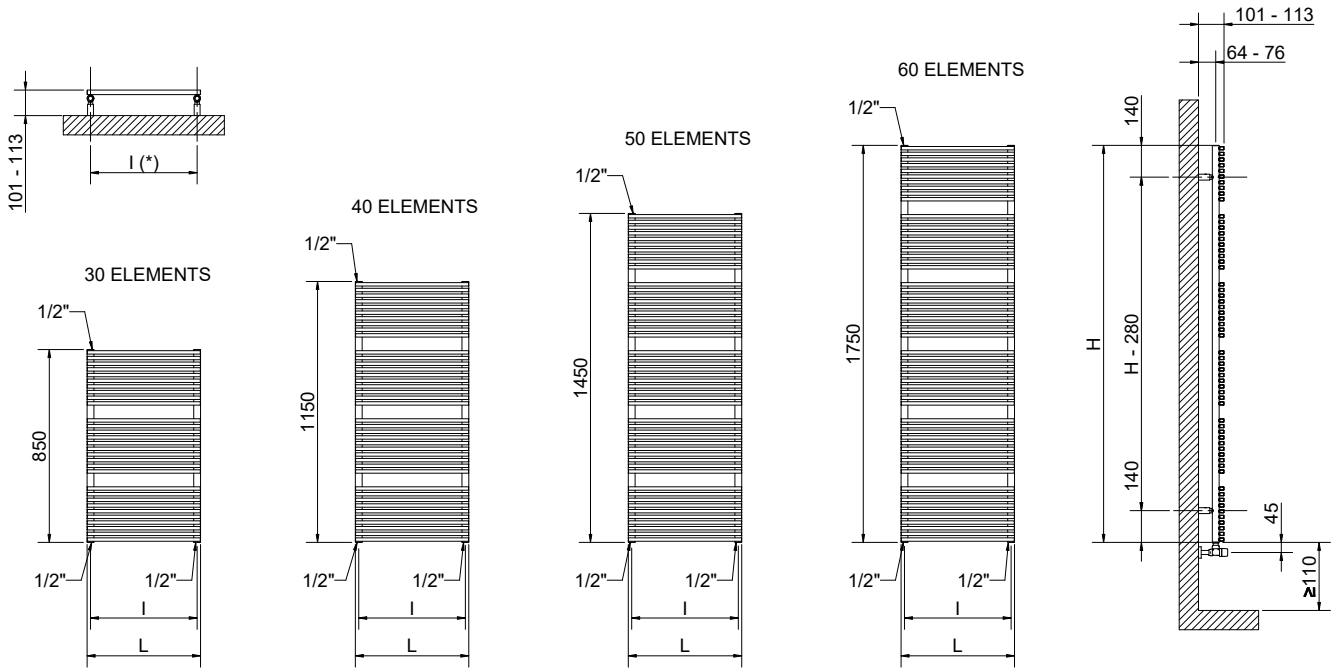
Quotes for square Kristal valves with thermostatic option

If ordered separately from the radiator, the accessories are available in standard white only

Art. nr. are referred to colour WHITE R01



Detail of the pipe centres 50 mm version



(*) The fixing kit has the same pipe centre (l) as the radiator

Quotes for Kristal valves

KATIA VX

Height [mm]	Width L [mm]	Pipe centres l [mm]	Art. nr.	Pipe centres 50 mm		Thermal output [Watt]				Dual energy kit [Watt]	
				Art. nr.	Dry Weight [Kg]	Surface [m ²]	Water content [lt]	Δt=50°C	Δt=30°C		Exp. n
850	400	370	3551826101001	3551826101101	9,3	1,00	2,68	474	256	1,2065	500
	500	470	3551826101005	3551826101105	11,2	1,21	3,12	571	310	1,1965	600
	400	370	3551826101002	3551826101102	12,4	1,33	3,60	580	311	1,2224	600
1150	500	470	3551826101006	3551826101106	14,9	1,61	4,18	731	392	1,2186	700
	600	570	3551826101009	3551826101109	17,3	1,89	4,75	886	476	1,2147	900
	800	770	3551826101012	3551826101112	23,4	2,45	6,38	1196	645	1,2100	1200
1450	400	370	3551826101003	3551826101103	15,6	1,67	4,52	723	385	1,2354	700
	500	470	3551826101007	3551826101107	18,6	2,03	5,24	892	477	1,2270	900
	600	570	3551826101010	3551826101110	21,7	2,37	5,96	1064	571	1,2185	1000
1750	800	770	3551826101013	3551826101113	29,3	3,00	8,00	1408	760	1,2077	1200
	400	370	3551826101004	3551826101104	18,7	2,00	5,43	861	454	1,2542	900
	500	470	3551826101008	3551826101108	22,4	2,45	6,29	1058	564	1,2315	1000
1750	600	570	3551826101011	3551826101111	26,0	2,85	7,16	1259	679	1,2084	1200
	800	770	3551826101014	3551826101114	35,2	3,60	9,61	1661	909	1,1794	1200

Art. nr. are referred to colour WHITE R01

For output at different ΔT, please refer to the following formula: desired output = output at ΔT 50 x (desired Δt/50)ⁿ