



# KATIA VX PLUS

**EUROPEAN  
WARRANTY**

**MATERIAL:**

- Vertical collectors in painted mild steel  $\varnothing$  30 mm.
- Double horizontal heating elements in painted mild steel 15x20 mm.

**FIXING KIT:**

Brackets, airvent, hexagonal tool, plugs and screws for mounting suitable for use on compact or hollow brick, user notice.

The kit is certified from TÜV in compliance with VDI 6036 - class 4.

**PACKAGING:**

Carton angular and profiles protected by a recyclable film in polyethylene. User notice included.

**PAINTING PROCESS:**

Painted with ecological epoxy powders (Certificate DIN 55900-1,-2).

**COLOURS:**

See colour chart.

**ACCESSORIES:**

For the complete list, please refer to the accessories chapter.

AVAILABLE FUNCTIONS:

- Hot water
- Dual energy

P. max: 8 bar

Functioning: hot water

T. max: 110° C

Connections: n° 2 x 1/2" G - 1 x 1/2" G

## CERTIFICATES



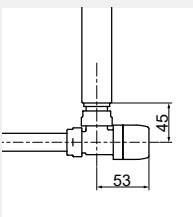
## ACCESSORIES



**Kristal valve square with thermostatic option white R01**

Copper conn.  $\varnothing$  12/14/15  
Art. nr. 5991990311161

Multilayer conn.  $\varnothing$  16  
Art. nr. 5991990311160



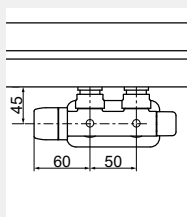
Quotes for square Kristal valves with thermostatic option



**Kristal valve square pipe centres 50 mm left white R01**

Copper conn.  $\varnothing$  12/14/15  
Art. nr. 5991990311188

Multilayer conn.  $\varnothing$  16  
Art. nr. 5991990311187



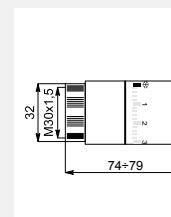
Quotes for square Kristal valves with thermostatic option



**Thermostatic head white**

(Kit 2 pieces)

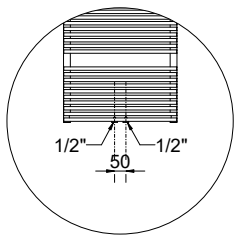
Art. nr. 5035270710016



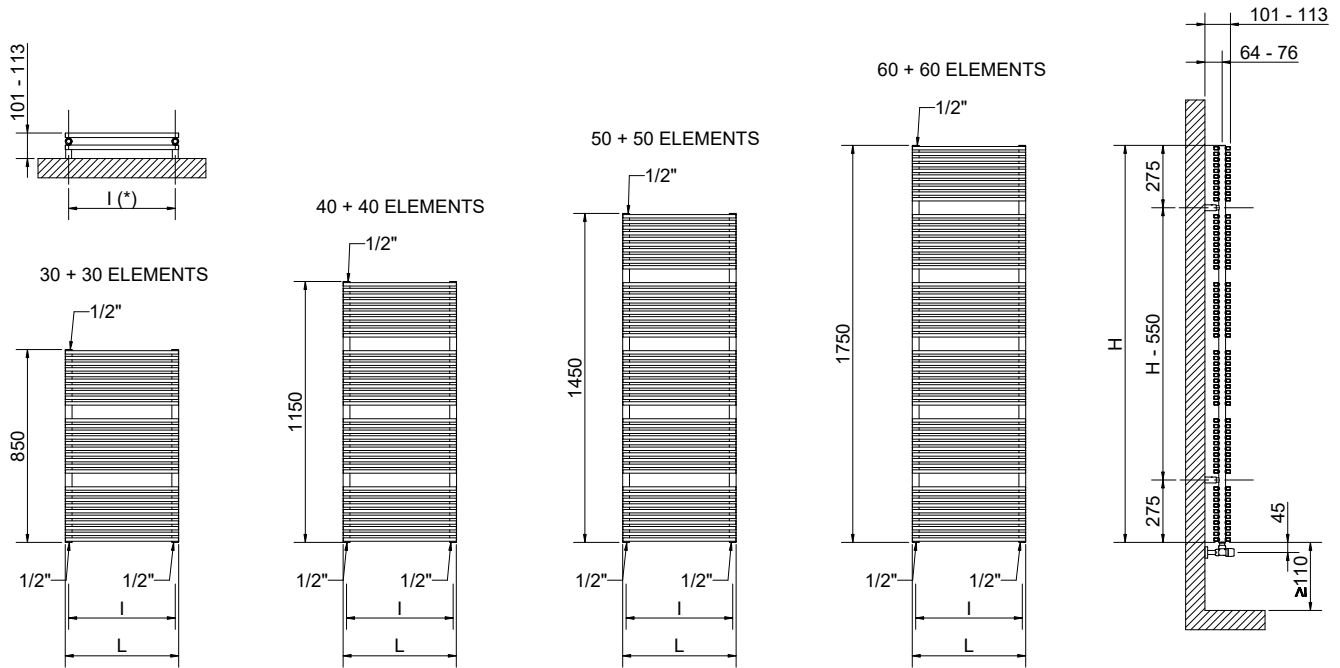
Thermostatic head quotes

*If ordered separately from the radiator, the accessories are available in standard white only*

*Art. nr. are referred to colour WHITE R01*



Detail of the pipe centres 50 mm version



(\*) The fixing kit has the same pipe centre (l) as the radiator

Quotes for Kristal valves

## KATIA VX PLUS

Height [mm]	Width L [mm]	Pipe centres l [mm]	Art. nr.	Pipe centres 50 mm			Thermal output [Watt]			Dual energy kit [Watt]	
				Art. nr.	Dry Weight [Kg]	Surface [m <sup>2</sup> ]	Water content [lt]	Δt=50°C	Δt=30°C		Exp. n
850	400	370	3551826100101	3551826100115	16,40	1,70	6,20	608	322	1,2419	600
	500	470	3551826100105	3551826100119	19,90	2,10	7,50	782	416	1,2353	700
	400	370	3551826100102	3551826100116	21,90	2,20	8,30	772	408	1,2497	700
1150	500	470	3551826100106	3551826100120	26,60	2,70	10,10	995	528	1,2405	1000
	600	570	3551826100109	3551826100123	31,30	3,20	11,80	1219	650	1,2312	1200
	800	770	3551826100112	3551826100126	40,60	4,20	15,40	1667	897	1,2128	1200
1450	400	370	3551826100103	3551826100117	27,40	2,80	10,40	937	493	1,2575	900
	500	470	3551826100107	3551826100121	33,20	3,40	12,60	1200	635	1,2457	1200
	600	570	3551826100110	3551826100124	39,10	4,00	14,80	1463	779	1,2339	1200
1750	800	770	3551826100113	3551826100127	50,00	5,30	19,20	1988	1071	1,2102	1200
	400	370	3551826100104	3551826100118	32,90	3,40	12,50	1106	580	1,2646	1000
	500	470	3551826100108	3551826100122	39,90	4,10	15,20	1398	739	1,2489	1200
1750	600	570	3551826100111	3551826100125	46,90	4,80	17,80	1690	900	1,2331	1200
	800	770	3551826100114	3551826100128	60,90	6,30	00,00	2274	1231	1,2017	1200

Art. nr. are referred to colour WHITE R01

For output at different ΔT, please refer to the following formula: desired output = output at ΔT 50 x (desired Δt/50)<sup>n</sup>