



GLORIA 18

**EUROPEAN
WARRANTY**

MATERIAL:

- Vertical collectors in painted mild steel \varnothing 30 mm.
- Horizontal heating elements in painted mild steel \varnothing 18 mm.

FIXING KIT:

Brackets, airvent, hexagonal tool, plugs and screws for mounting suitable for use on compact or hollow brick, user notice. The kit is certified from TÜV in compliance with VDI 6036 - class 4.

PACKAGING:

Carton angular and profiles protected by a recyclable film in polyethylene. User notice included.

PAINTING PROCESS:

Painted with ecological epoxy powders (Certificate DIN 55900-1,-2).

COLOURS:

See colour chart.

ACCESSORIES:

For the complete list, please refer to the accessories chapter.

AVAILABLE FUNCTIONS:

- Hot water
- Dual energy

P. max: 8 bar

Functioning: hot water

T. max: 110° C

Connections: n° 2 x 1/2" G - 1 x 1/2" G

CERTIFICATES



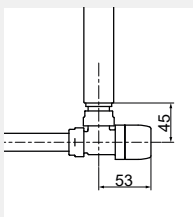
ACCESSORIES



Kristal valve square with thermostatic option white R01

Copper conn. \varnothing 12/14/15
Art. nr. 5991990311161

Multilayer conn. \varnothing 16
Art. nr. 5991990311160



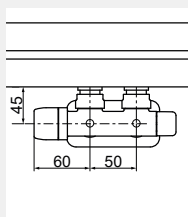
Quotes for square Kristal valves with thermostatic option



Kristal valve square pipe centres 50 mm left white R01

Copper conn. \varnothing 12/14/15
Art. nr. 5991990311188

Multilayer conn. \varnothing 16
Art. nr. 5991990311187



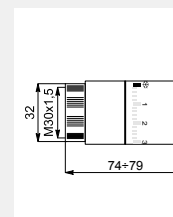
Quotes for square Kristal valves with thermostatic option



Thermostatic head white

(Kit 2 pieces)

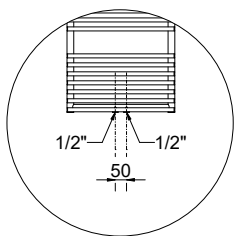
Art. nr. 5035270710016



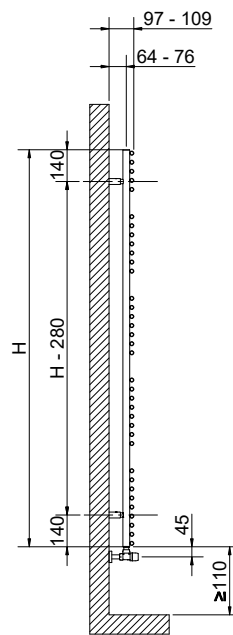
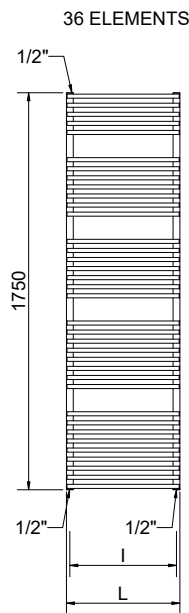
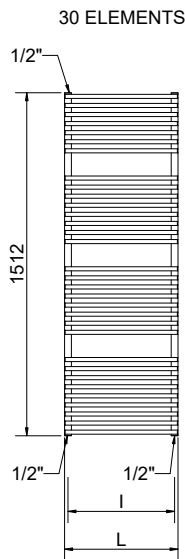
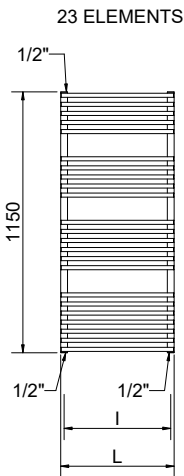
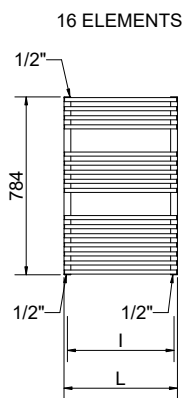
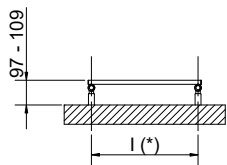
Thermostatic head quotes

If ordered separately from the radiator, the accessories are available in standard white only

Art. nr. are referred to colour WHITE R01



Detail of the pipe centres 50 mm version



(*) The fixing kit has the same pipe centre (l) as the radiator

Quotes for Kristal valves

GLORIA 18

Height [mm]	Width L [mm]	Pipe centres l [mm]	Art. nr.	Pipe centres 50 mm		Thermal output [Watt]				Dual energy kit [Watt]	
				Art. nr.	Dry Weight [Kg]	Surface [m ²]	Water content [lt]	Δt=50°C	Δt=30°C		Exp. n
780	430	400	3551666100140	3551666100163	5,1	0,537	2,2	347	192	1,1628	300
	480	450	3551666100141	3551666100164	5,5	0,582	2,4	374	208	1,1533	300
	530	500	3551666100142	3551666100165	5,6	0,627	2,6	413	229	1,1540	400
	580	550	3551666100143	3551666100166	6,3	0,673	2,7	429	240	1,1344	400
1150	430	400	3551666100145	3551666100168	7,3	0,77	3,2	477	259	1,1959	500
	480	450	3551666100146	3551666100169	7,9	0,84	3,4	519	283	1,1905	500
	530	500	3551666100147	3551666100170	8	0,906	3,7	573	313	1,1825	600
1500	580	550	3551666100148	3551666100171	9,1	0,971	3,8	604	331	1,1797	600
	430	400	3551666100150	3551666100173	10	1,063	4,4	622	335	1,2128	600
	480	450	3551666100151	3551666100174	10,8	1,154	4,7	680	366	1,2100	700
	530	500	3551666100152	3551666100175	11	1,238	5	750	406	1,2012	700
1750	580	550	3551666100153	3551666100176	12,4	1,335	5,3	796	430	1,2045	700
	430	400	3551666100155	3551666100178	11,4	1,205	5	728	390	1,2238	700
	480	450	3551666100156	3551666100179	12,3	1,307	5,3	797	427	1,2229	700
	530	500	3551666100157	3551666100180	12,5	1,409	5,7	880	472	1,2211	900
	580	550	3551666100158	3551666100181	14,1	1,511	6	935	501	1,2209	900

Art. nr. are referred to colour WHITE R01

For output at different ΔT, please refer to the following formula: desired output = output at Δt 50°C x (desired Δt/50)ⁿ.