



DORY

**EUROPEAN
WARRANTY**

MATERIAL:

- Vertical collectors in painted mild steel \varnothing 30 mm.
- Horizontal heating elements in painted mild steel 50x10 mm.

FIXING KIT:

Brackets, airvent, hexagonal tool, plugs and screws for mounting suitable for use on compact or hollow brick, user notice.

The kit is certified from TÜV in compliance with VDI 6036 - class 4.

PACKAGING:

Carton angular and profiles protected by a recyclable film in polyethylene. User notice included.

PAINTING PROCESS:

Painted with ecological epoxy powders (Certificate DIN 55900-1,-2).

COLOURS:

See colour chart.

ACCESSORIES:

For the complete list, please refer to the accessories chapter.

AVAILABLE FUNCTIONS:

- Hot water
- Electric
- Dual energy
- Blower
- Blower dual energy

P. Max: 5 bar

Functioning: hot water

T. Max: 110° C

Connections: n° 2 x 1/2" G - 1 x 1/2" G

CERTIFICATES



ACCESSORIES

Kristal valve square with thermostatic option white R01



Copper conn. \varnothing 12/14/15
Art. nr. 5991990311161

Multilayer conn. \varnothing 16
Art. nr. 5991990311160



Kit 2 hooks white R01

Art. nr. 5991990310389

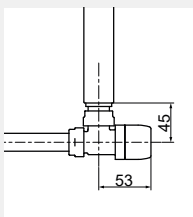


Towel bar white R01

Width 440 mm

Available with width \geq 500 mm

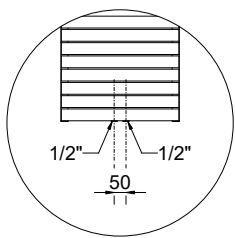
Art. nr. 5991990331127



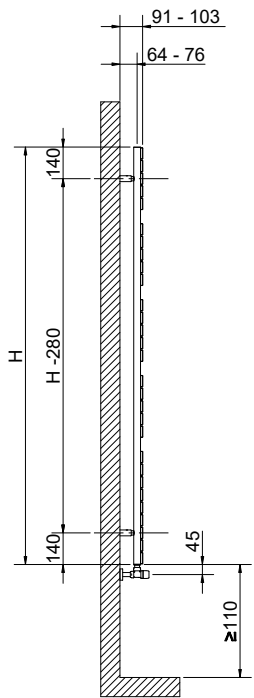
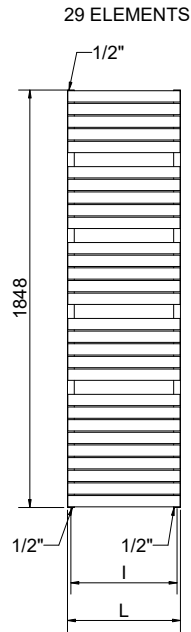
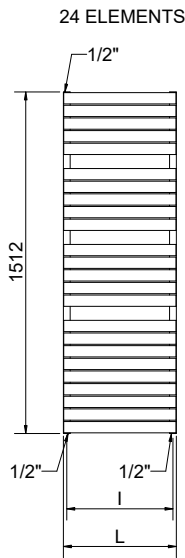
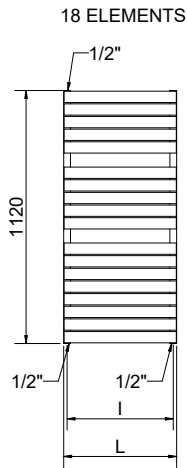
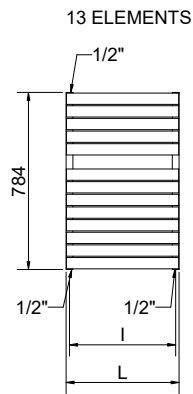
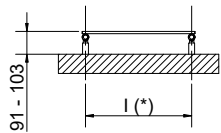
Quotes for square Kristal valves with thermostatic option

If ordered separately from the radiator, the accessories are available in standard white only

Art. nr. are referred to colour WHITE R01



Detail of the pipe centres 50 mm version



(*) The fixing kit has the same pipe centre (l) as the radiator

Quotes for Kristal valves

DORY

Height [mm]	Width L [mm]	Pipe centres l [mm]	Art. nr.	Pipe centres 50 mm			Thermal output [Watt]			Dual energy kit [Watt]	
				Art. nr.	Dry Weight [Kg]	Surface [m ²]	Water content [lt]	Δt=50°C	Δt=30°C		Exp. n
784	400	370	3551426100200	3551426100230	7,3	0,772	2,8	355	195	1,1761	300
	500	470	3551426100210	3551426100240	8,7	0,928	3,2	442	243	1,1679	400
	400	370	3551426100201	3551426100231	10,2	1,075	3,9	482	265	1,1741	500
1120	500	470	3551426100211	3551426100241	12,1	1,291	4,5	592	326	1,1693	600
	600	570	3551426100221	3551426100251	14,1	1,507	5,2	702	387	1,1660	700
1512	400	370	3551426100202	3551426100232	13,6	1,437	5,2	631	347	1,1716	600
	500	470	3551426100212	3551426100242	16,2	1,725	6,1	767	422	1,1709	700
	600	570	3551426100222	3551426100252	18,8	2,013	6,9	904	497	1,1704	900
1848	400	370	3551426100203	3551426100233	16,5	1,740	6,3	751	413	1,1696	700
	500	470	3551426100213	3551426100243	19,6	2,088	7,4	911	501	1,1722	900
	600	570	3551426100223	3551426100253	22,8	2,436	8,4	1071	588	1,1740	1000

Art. nr. are referred to colour WHITE R01

For output at different ΔT, please refer to the following formula: desired output = output at ΔT 50 x (desired Δt/50)ⁿ