



CLAUDIA® SQUARE

WARRANTY
5 YEARS

MATERIAL:

- Frame collector in painted mild steel 40x40 mm.
- Horizontal heating elements in painted mild steel ø 25 mm.

FIXING KIT:

Brackets, airvent, hexagonal tool, plugs and screws for mounting suitable for use on compact or hollow brick, user notice.

The kit is certified from TÜV in compliance with VDI 6036 - class 4.

PACKAGING:

The radiator is protected by recyclable carton box. User notice included.

PAINTING PROCESS:

Painted with ecological epoxy powders (Certificate DIN 55900-1,-2).

COLOURS:

See colour chart.

ACCESSORIES:

For the complete list, please refer to the accessories chapter.

AVAILABLE FUNCTIONS:

- Hot water
- Dual energy

P. max: 8 bar

Functioning: hot water

T. max: 110° C

Connections: n° 2 x 1/2" G - 1 x 1/2" G

CERTIFICATES



ACCESSORIES



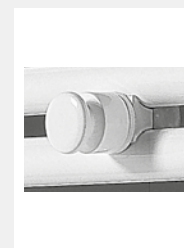
Kristal valve square with thermostatic option white R01

Copper conn. Ø 12/14/15
Art. nr. 5991990311161

Multilayer conn. Ø 16
Art. nr. 5991990311160

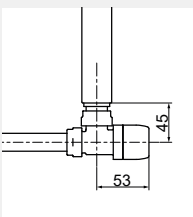


Towel bar painted mild steel white R01



Kit 2 hooks white R01

Art. nr. 5991990310028

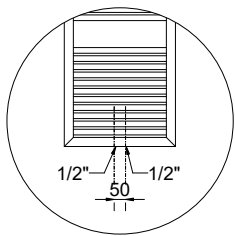


Quotes for square Kristal valves with thermostatic option

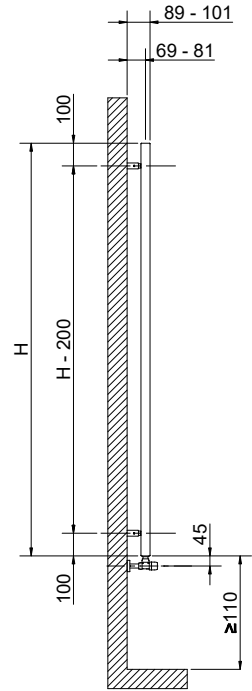
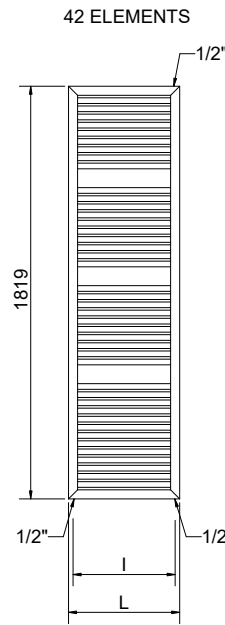
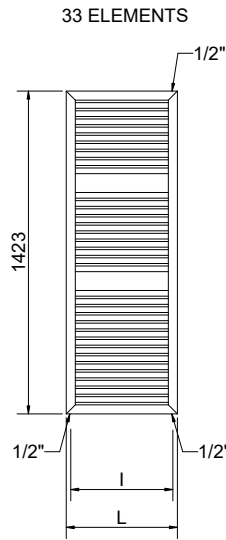
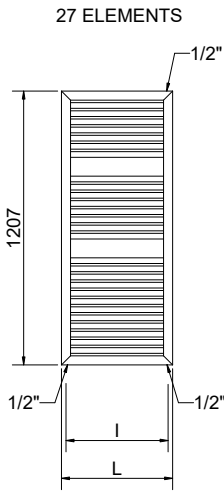
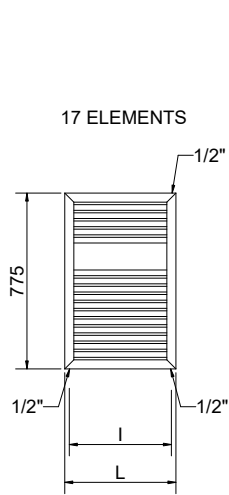
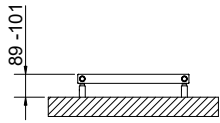
Width	Art. nr.	Available on width
276 mm	5991990310047	≥ 400 mm
368 mm	5991990310029	≥ 500 mm

If ordered separately from the radiator, the accessories are available in standard white only

Art. nr. are referred to colour WHITE R01



Detail of the pipe centres 50 mm version



(*) The fixing kit has the same pipe centre (l) as the radiator

Quotes for Kristal valves

CLAUDIA® SQUARE

Height [mm]	Width L [mm]	Pipe centres l [mm]	Art. nr.	Pipe centres 50 mm					Thermal output [Watt]			Dual energy kit [Watt]
				Art. nr.	Dry Weight [Kg]	Surface [m ²]	Water content [lt]	Δt=50°C	Δt=30°C	Exp. n		
775	490	450	3551356100301	3551356100309	7,3	0,860	4,7	407	215	1,2472	400	
	540	500	3551356100305	3551356100313	7,9	0,938	5,1	451	239	1,2451	400	
1207	490	450	3551356100302	3551356100310	11,0	1,334	7,2	629	332	1,2488	600	
	540	500	3551356100306	3551356100314	11,8	1,453	7,9	693	367	1,2437	700	
1423	490	450	3551356100303	3551356100311	12,9	1,586	8,6	753	398	1,2498	700	
	540	500	3551356100307	3551356100315	13,8	1,729	9,4	827	438	1,2429	700	
1819	490	450	3551356100304	3551356100312	16,0	1,988	9,2	944	501	1,2417	900	
	540	500	3551356100308	3551356100316	17,2	2,163	10,0	1030	548	1,2336	1000	

Art. nr. are referred to colour WHITE R01

For output at different ΔT, please refer to the following formula: desired output = output at ΔT 50 x (desired Δt/50)ⁿ