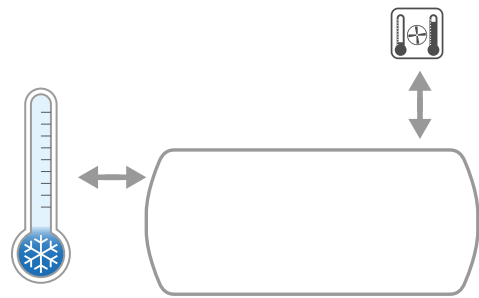


CHILLED WATER STORAGE TANK GALVANIZED ZC 20 HORIZONTAL

HORIZONTAL GALVANIZED CHILLED WATER TANK



| PRESSURE | TEMPERATURE |
|----------|--------------|
| Pmax | Tmax |
| 6 bar | -10 / +60 °C |



APPLICATION AND TECHNICAL DESCRIPTION

Storage of chilled water for cooling systems.

Horizontal inertial water tanks are used to increase the thermal inertia and, for those installations with a low water-capacity, to avoid that the chiller is continuously working. These tanks are made in galvanized mild steel.

EXTERNAL LINING

Blue PVC with plastic black caps for connections.

MATERIAL

Galvanized mild steel

INSULATION

20 mm fixed polyethylene anti-condensation. Not self-extinguishing version. Not removable from the tank.

WARRANTY

2 years-See general sales conditions and warranty.

ACQ. REF. ZC 20 OR

(INSULATION 20 mm
Not self-extinguishing)

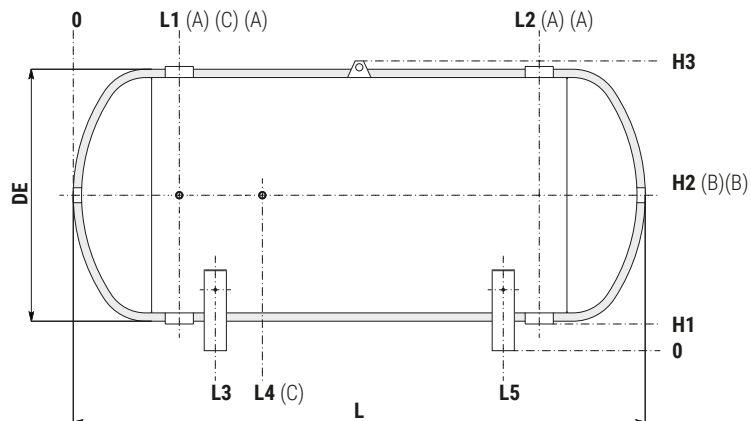
Art. Nr.

| Model | Art. Nr. |
|-------|---------------|
| 100 | 3001161030001 |
| 200 | 3001161030002 |
| 300 | 3001161030003 |
| 500 | 3001161030004 |
| 800 | 3001161030005 |
| 1000 | 3001161030006 |
| 1500 | 3001161030107 |
| 2000 | 3001161030108 |
| 2500 | 3001161030113 |
| 3000 | 3001161030109 |
| 4000 | 3001161030110 |
| 5000 | 3001161030112 |

A To the System

B Safety Valve/Additional connection

C Connection for instrumentation 1/2" F



| Model | Weight | Volume | DE | L | L1 | L2 | L3 | L4 | L5 | H1 | H2 | H3 | B | A | C |
|-------|--------|--------|------|------|-----|------|-----|-----|------|-----|-----|------|-------|-------|------|
| | [Kg] | [lit] | | | | | | | | | | | | | |
| 100 | 32 | 99 | 440 | 934 | 215 | 720 | 290 | 415 | 645 | 63 | 293 | 523 | 1"1/4 | 1"1/2 | 1/2" |
| 200 | 53 | 187 | 490 | 1339 | 230 | 1110 | 335 | 480 | 1005 | 61 | 316 | 571 | 1"1/4 | 1"1/2 | 1/2" |
| 300 | 68 | 288 | 590 | 1389 | 275 | 1115 | 365 | 525 | 1025 | 115 | 425 | 760 | 1"1/4 | 2" | 1/2" |
| 500 | 102 | 496 | 690 | 1689 | 320 | 1370 | 415 | 570 | 1275 | 107 | 472 | 857 | 1"1/4 | 3" | 1/2" |
| 800 | 148 | 788 | 790 | 2000 | 350 | 1650 | 480 | 650 | 1520 | 101 | 516 | 951 | 1"1/4 | 3" | 1/2" |
| 1000 | 170 | 1034 | 890 | 2066 | 383 | 1683 | 513 | 683 | 1553 | 96 | 561 | 1046 | 1"1/2 | 3" | 1/2" |
| 1500 | 184 | 1432 | 990 | 2250 | 370 | 1880 | 505 | 670 | 1745 | 82 | 597 | 1142 | 2" | 3" | 1/2" |
| 2000 | 220 | 1970 | 1140 | 2320 | 405 | 1915 | 525 | 705 | 1795 | 73 | 663 | 1283 | 2" | 3" | 1/2" |
| 2500 | 284 | 2300 | 1290 | 2140 | 470 | 1670 | 620 | 770 | 1520 | 154 | 829 | 1524 | 2" | 4" | 1/2" |
| 3000 | 330 | 2908 | 1290 | 2640 | 470 | 2170 | 620 | 870 | 2020 | 154 | 829 | 1524 | 2" | 4" | 1/2" |
| 4000 | 452 | 3749 | 1440 | 2730 | 515 | 2215 | 665 | 915 | 2065 | 142 | 892 | 1662 | 2" | 4" | 1/2" |
| 5000 | 574 | 4964 | 1640 | 2790 | 545 | 2245 | 695 | 945 | 2095 | 125 | 975 | 1845 | 2" | 4" | 1/2" |