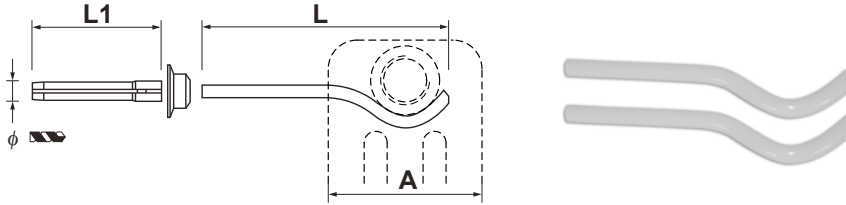


WALL BRACKETS KIT

For the installation it is recommended to use the wall brackets provided by Cordivari, with different sizes depending on model. The kit includes:

- 2 wall brackets
- 2 plastic nogs



HOW TO CALCULATE THE NUMBER OF WALL BRACKETS REQUIRED.

Always remember to consider both the Dry Weight of the radiator and its water content.

N° Columns	Art. nr.	ø Nogs (mm)	L (mm)	L1 (mm)	max load [kg] kit
2	5991990310378	12	179	100	150
3	5991990310379	12	207	100	100
4	5991990310380	15	223	111	200
5	5991990310381	15	254	111	160
6					80

The code nr of the chart refer to standard colour white R01 RAL 9010; colours different from standard are supplied exclusively with the matching coloured radiator. Colour surcharge indicated in colour chart at page 486.

Eg: an Ardesia radiator consisting of:

n° columns: 4 - Height: 1000 - n° elements: 48

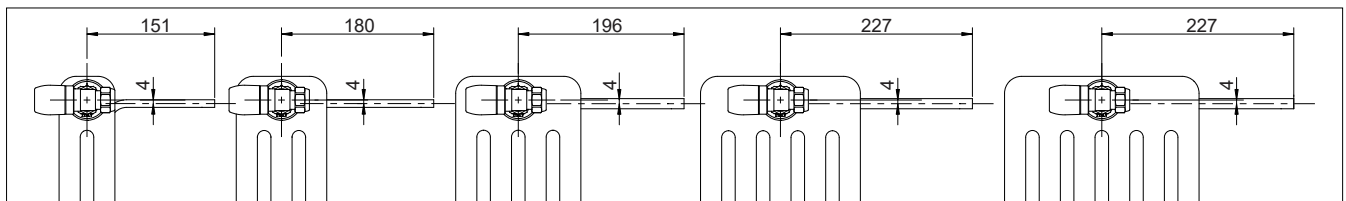
Total Dry Weight of 1 section, water included: $2.96 * [\text{Dry Weight of empty section}] + 1.84 *$

$[\text{Dry Weight of water contained in the section}] = \text{total kg. 4.8.}$

Total Dry Weight of the whole radiator: $4.8 \text{ kg} \times 48 [\text{sections}] = 230.4 \text{ kg}$

No. of fixing kits to order: $230.4 \text{ kg} [\text{total Dry Weight of the radiator}] / 200 [\text{max Dry Weight that 1 wall brackets kit can take for Ardesia® 4 columns}] = 1.15$. The number of kits necessary in this case is 2 - Code Nr. **5991990310380**.

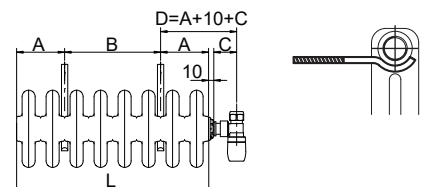
(*) Above data are taken from the relevant technical table



Max. number of sections that can be supported by a pair of brackets available for solid/masonry and perforated brick walls.

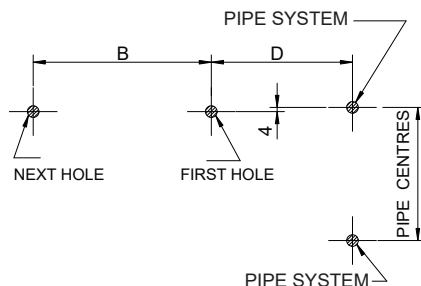
Height	N° COLUMNS				
	2	3	4	5	6
207	40	40	40	40	40
300	40	40	40	40	31
356	40	40	40	40	27
400	40	40	40	40	25
406	40	40	40	40	24
500	40	40	40	40	20
556	40	40	40	40	19
586	40	40	40	40	18
600	40	40	40	40	18
626	40	40	40	40	17
656	40	40	40	39	16
676	40	40	40	38	16
750	40	36	40	35	14
756	40	36	40	34	14
786	40	35	40	33	14
856	40	32	40	31	13
876	40	31	40	30	12
900	40	30	40	29	12
926	40	30	40	29	12
956	40	30	40	29	12
1000	40	28	40	27	11
1056	40	26	39	25	11
1200	40	23	35	23	9
1500	40	19	28	18	8
1656	39	17	26	17	7
1800	36	16	24	15	6
1856	35	15	23	15	6
2000	32	14	22	14	6
2056	32	14	21	13	6
2200	30	13	20	13	5
2500	26	12	17	11	5

DETERMINE THE BRACKET POSITION IN RELATION TO THE RADIATOR



DETERMINE THE POSITION OF THE RADIATOR IN RELATION TO PIPES

REALIZE HOLES ON THE WALL IN RELATION TO THE PIPES POSITION



To determine A and B

- for N. of sections < 8:
 - A = 46
 - B = L - 92
- for N. of sections ≥ 8:
 - A = 92
 - B = L - 184 for 2 brackets
 - B = $[(L - 184) / 2] - 23$ for 4 brackets and even N. of sections
 - B = $(L - 184) / 2$ for 4 brackets and uneven N. of sections

INSTALLATION AND FIXING

RAPID FIXING SAFETY KIT VDI 6036 COLOUR WHITE



These new fixing kit comply to **VDI 6036** norm regulating the safe anchoring of wall hung radiators. They guarantee a correct support in relation to the radiator Dry Weight and ensure stability and resistance to traction from every direction. This leads to maximum safety and easy installation.

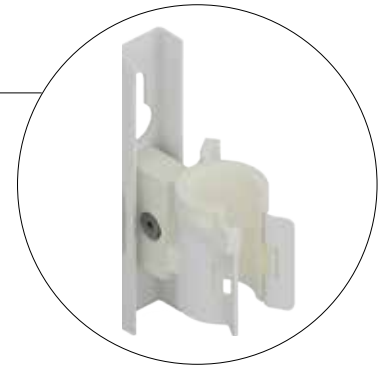
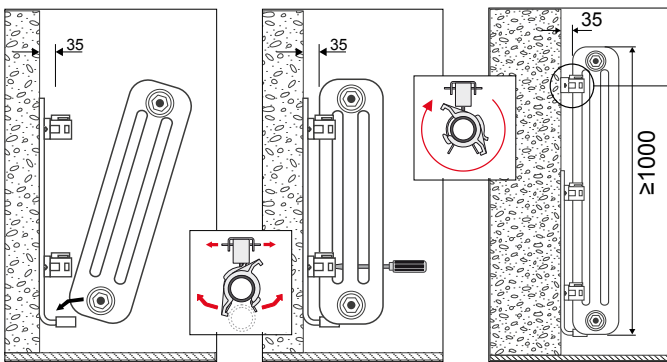
RAPID FIXING COLOUR WHITE (*)

Pair of fixing kit	Suitable for the following heights	Art. nr.	Max Load
	300 mm to 350 mm	5102000000440	150
	350 mm to 450 mm	5102000000441	
	500 mm to 700 mm	5102000000442	
	750 mm to 1000 mm	5102000000443	
	over 1000 mm (**)	5102000000444	

(*) The code nr of the chart refers to standard colour white R01 - RAL 9010; colours different from standard are supplied exclusively with the matching coloured radiator. Colour surcharge indicated in colour chart page 486.

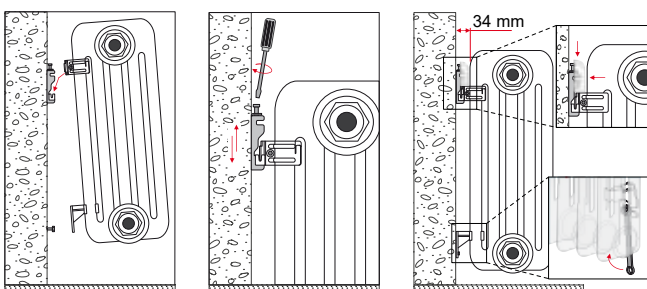
(**) For Heights above 1000 mm the art. code includes an additional pair of fixing kit to be placed on the upper part of the radiator so to ensure complete stability as per below drawing.

EXAMPLE OF INSTALLATION WITH RAPID SAFETY KIT



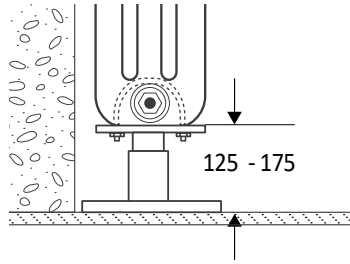
UNIVERSAL RAPID SAFETY KIT

PAIR OF WALL TIES FIXING KIT COLOUR WHITE	Art. nr.	Max Load
	5991990310311	150



FLOOR FIXING KIT

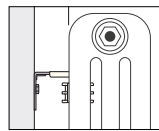
FLOOR FIXING KIT WITH ADJUSTABLE FEET



Pair of floor fixing kit with adjustable height. From 125mm up to 175mm. Available for radiators from 2 up to 6 columns. Colour White

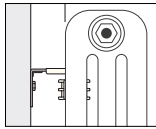
Art. nr. 5991990310040

This floor fixing support allows the installation of Ardesia® batteries whenever the radiator dry weight can not be supported from walls only. They ensure stability and easy installation.

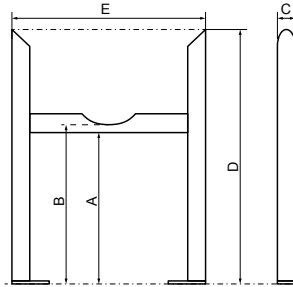


PLEASE NOTE:
it requires the use of a wall tie.

FIXING KIT WITH COLOURABLE SLIP ON FEET



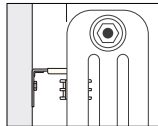
PLEASE NOTE:
it requires the use of a wall tie not included in the price. See page 463



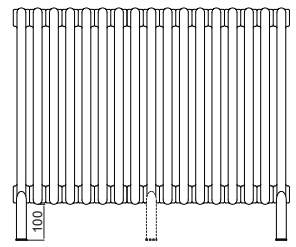
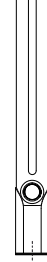
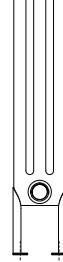
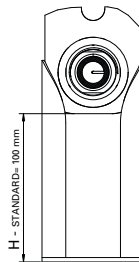
PAIR OF COLOURABLE SLIP ON FEET		A	B	C	D	E
Suitable for	Art. nr. (COLOUR WHITE R01)	[mm]				
2 Columns	5102000000580	120	125,5	30	200	71,5
3 Columns	5102000000581	120	125,5	30	200	112,5
4 Columns	5102000000582	120	125,5	30	200	153,5
5 Columns	5102000000583	120	125,5	30	200	194
6 Columns	5102000000584	120	125,5	30	200	236

For colours different from standard white R01 see colour chart page 486.

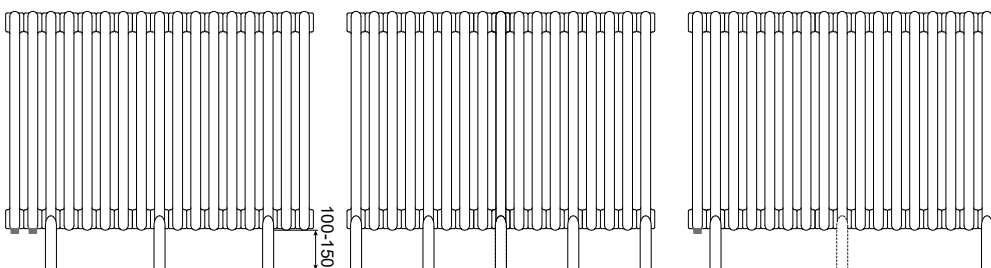
WELDED FEET SUPPORT



PLEASE NOTE:
it requires the use of a wall tie.
(not included in price)
See page 463



STANDARD EXECUTION	2 Columns	3 Columns	4 Columns	5 Columns	6 Columns	FEET STANDARD HEIGHT
	connected			separate		[mm]
from 3 to 23 Elements	2 pairs	2 pairs	2 pairs	2 pairs	2 pairs	100
from 24 to 40 Elements	3 pairs	3 pairs	3 pairs	3 pairs	3 pairs	100
from 41 to 63 Elements	4 pairs	4 pairs	4 pairs	4 pairs	4 pairs	100



On demand, it is possible to realize:

- bottom connections to ease installation
- welded feet positioned irregularly
- higher number of welded feet

For colours different from standard white R01 see colour chart page 486.

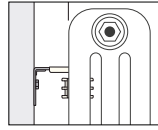
FLOOR FIXING KIT

PAIR OF CAST-IRON FLOOR SUPPORTS



PAIR OF CAST-IRON FLOOR SUPPORTS.

Art. nr. 5991990310308



PLEASE NOTE:
If requires the use of a wall tie.
See below

For different Colours see Colour Chart at page 486

SINGLE CAST-IRON FLOOR SUPPORT



Single cast-iron floor support
COLOUR WHITE.

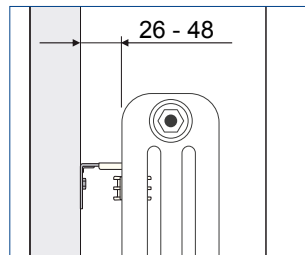
Art. nr. 5991990310517

For different Colours see Colour Chart at page 486

WALL TIE

Useful to ensure stability and avoid the risk of accidental overturn

PLEASE NOTE: it is necessary to use the wall tie in case of feet mounting option.



KIT OF 2 SINGLE WALL TIES
COLOUR WHITE

Art. nr. 5991990310307

PLASTERBOARDS WALL ADAPTORS



MAX LOAD IN KG FOR A PAIR OF PLASTERBOARDS WALL ADAPTORS

Shelves	Thickness of the wall 12,5 mm	Thickness of the wall 12,5 +12,5 mm
2 Columns	46 kg	74 kg
3 Columns	46 kg	74 kg
4 Columns	34 kg	50 kg
5 Columns	30 kg	45 kg
6 Columns	28 kg	40 kg

1 PAIR OF PLASTERBOARDS WALL ADAPTORS - WALL THICKNESS 12,5 MM.
SUITABLE FOR 2/3 COLUMNS WALL BRACKETS
Kit Art. nr. 5150991100001

1 PAIR OF PLASTERBOARDS WALL ADAPTORS - WALL THICKNESS 25 MM.
SUITABLE FOR 2/3 COLUMNS WALL BRACKETS
Kit Art. nr. 5150991100003

1 PAIR OF PLASTERBOARDS WALL ADAPTORS - WALL THICKNESS 12,5 MM.
SUITABLE FOR 4/5/6 COLUMNS WALL BRACKETS
Kit Art. nr. 5150991100002

1 PAIR OF PLASTERBOARDS WALL ADAPTORS - WALL THICKNESS 25 MM.
SUITABLE FOR 4/5/6 COLUMNS WALL BRACKETS
Kit Art. nr. 5150991100004

FIXING KIT (SUITABLE FOR COLOUR F28 - SHINY TRANSPARENT)



1 PAIR FIXING KIT
(SUITABLE FOR COLOUR F28 - SHINY TRANSPARENT)

Art. nr. 5102000030568

Max load 78 kg.



2 PAIRS FIXING KIT
(SUITABLE FOR COLOUR F28 - SHINY TRANSPARENT)

Art. nr. 5102000030569

Max load 156 kg.

BLANKING PLUG AND REDUCING BUSHES AVAILABLE IN COLOUR WHITE RAL 9010 ONLY

RIGHT SIDE

10 PCS.

1" caps
Right ø 44 mm
Silicone gasket
Size 1"



Art. nr. 5160000000002

LEFT SIDE

10 PCS.

1" caps
Left ø 44 mm
Silicone gasket
Size 1"



Art. nr. 5160000000004

BLANKING PLUGS

10 PCS.



1/2" - Art. nr. 5160000000079

3/8" - Cod. 5160000000080

RIGHT REDUCING BUSHES

10 PCS.

Reducing Bush RIGHT
Ø 42 mm
Silicone gasket



Art. nr. 5160000000013 1" x 3/4"

Art. nr. 5160000000009 1" x 1/2"

Art. nr. 5160000000017 1" x 3/8"

Art. nr. 5160000000021 1" x 1/4"

LEFT REDUCING BUSHES

10 PCS.

Reducing Bush LEFT
Ø 42 mm
Silicone gasket



Art. nr. 5160000000015 1" x 3/4"

Art. nr. 5160000000011 1" x 1/2"

Art. nr. 5160000000019 1" x 3/8"

Art. nr. 5160000000023 1" x 1/4"

NIPPLING KIT

Kit includes:

- 2 reducing bushes Right from 1" M to 1/2 - 3/8" F
- 1 reducing bush left from 1" M to 1/2 - 3/8" F
- 1 cap 1" left
- 1 Air Vent 1/2" - 3/8"
- Gaskets.



1/2" - Art. nr. 5160000000030

3/8" - Art. nr. 5160000000031

Nippling kit for F28 SHINY TRANSPARENT models

1/2" - Art. nr. 5160000000219

HYDRAULIC ACCESSORIES

AIRVENT VALVES

10 PCS.

1/2", 1/4", 3/8"



1/2" - Art. nr. 5160000000005

1/4" - Art. nr. 5160000000007

3/8" - Art. nr. 5160000000006

NIPPLES

10 PCS.

1" nipples + silicon gasket

Use only Cordivari Nipples. The use of other nipples does not guarantee the sealing of the radiator and excludes the WARRANTY.



Art. nr. 5160000000026

DIVERTER

10 PCS.

Reccomended for radiators with less than 10 sections and/or higher than 1000 mm.



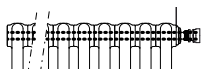
Art. nr. 5160000000028

INLET LANCE

When Ardesia® tubular radiator with lateral connections exceeds the number of sections and length indicated in below chart, in order to guarantee the normal functioning of the radiator and its thermal output, it is necessary to insert an inlet lance. Its length must be 2/3 of the total radiator length.

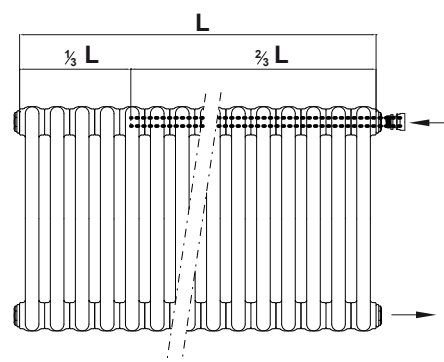
INLET LANCE KIT

length 4000 mm (to be cut according to desired length) with 1/2" fitting exclusively for Cordivari kristal valve



Art. nr. 5006170030110

Columns	N° elements	Length of the inlet lance [mm]
2	> 85	3910
3	> 83	3818
4	> 80	3680
5	> 70	3220
6	> 55	2530



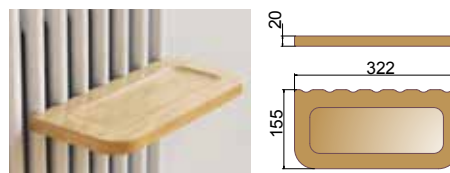
HOOKS AND TOWEL BAR

HOOK



Art. nr.	Finishing/colours	N° of single items per kit
5991990310376	CHROMED	2
5991990310375	WHITE	2

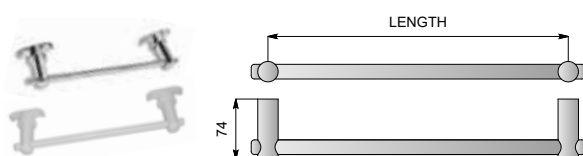
WOODEN SHELVES



Art. nr.	Finishing
5991990500013	White Oak

Available only for Ardesia® 2 and 3 COLUMNS ≥ 9 elements

TOWEL BAR



ART. NR.	Finishing/colours	Width	N° elements
5991990310392	WHITE	322	from 7 onwards
5991990310394		525	from 10 onwards
5991990310393	CHROMED	322	from 7 onwards
5991990310395		525	from 10 onwards



MAINTENANCE

TOUCH-UP PENS - R01

2 PCS PAC
COLOUR
WHITE RAL 9010



Art. nr. 5160000000076

TOUCH-UP PENS - R02

2 PCS PACK
COLOUR
WHITE RAL 9016



Art. nr. 5160000000077

WOOL BRUSH FOR CLEANING RADIATORS

- Antistatic. Ideal to capture dust
- It can be used on both wet and dry surfaces
- Flexible structure, it allows to clean each part of the radiator
- Hand washable in cold water



Art. nr. 5991990000016